

# CL7200 SERIES

## TOUCH SCREEN & MULTIMEDIA POS Scale

CL7200 features an easy-to-use 10.2" touch screen display and a 7" full color multimedia customer display. Use the multimedia display to promote marketing videos or images.

- 140,000+ PLU capacity: program upto 99 categories with 20 pages per category and 72 direct PLUs per page
- Built-in thermal printer: label or receipt
- CL-Works Pro PC software
- Multiple interfaces: USB, LAN, RS232C and Cash Drawer



CL-Works Pro



Scan with your smartphone  
to find more products



**GC Weighing  
& Calibrations**

**CAS**  
www.casscale.com.au

# CL7200 SERIES

## Features

### Splash resistant

The touch screen display is splash-resistant by design in order to prevent breakdowns due to liquid spills.



### Large 10.2" user display screen

Clearly view all metrics and PLU information.



### Convenient GUI

User-oriented and convenient GUI interface. Easy to input and change settings.



### User-friendly interface

Easy to navigate touch screen that reduces user input errors.



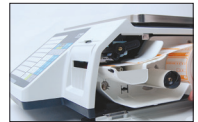
### Quality built-in thermal printer

Printing speed of 100mm/sec and resolution of 202dpi. Print labels or tickets.



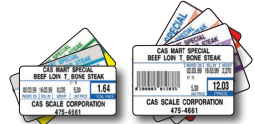
### Convenient printer cassette application

Quick and easy way to replace label or ticket rolls. Simply remove the cassette and replace the roll then reinsert the cassette.



### Diverse range of barcodes and label formats

45 basic preset label formats and a diverse range of barcodes. Capable of free format design using CL-WORKS program.



### Supports a diverse range of interfaces

It is possible to establish a powerful network system with a diverse range of interfaces including USB 2.0x2, LAN, RS-232C and Cash drawer.

### High resolution multimedia customer display

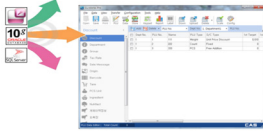
Customers can clearly check the values and product information. Vendors can also use the screen to display a diverse range of multimedia including promotional videos and product images.



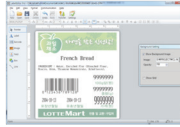
# CL7200 SERIES

## Data management through network and PC Software

CL-Works Pro is capable of lumped data transmission and data editing along with multimedia management.



Easy transmission of all the data



View images in advance

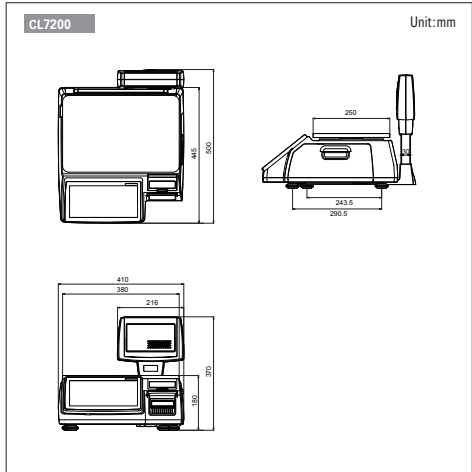


Image editing function

## SPECIFICATIONS

Model	CL7200	
Max. capacity (kg)	6/15	15/30
Readability (g)	2/5	5/10
Resolution	1/3,000(Dual interval)	
Operating system (OS)	Linux	
Display type	Staff	10.2" Color TFT-LCD (resistant membrane touch panel)
	Consumer	7" Color TFT-LCD
Printer speed	Max. 100mm/sec	
Printer resolution	202dpi	
Label size (mm)	Width: 40 ~ 60, length: 30 ~ 200	
Power	AC 100-240 V, 50/60Hz	
Operation temperature	-10°C ~ 40°C	
Platter size(mm)	380(W) x 250(H)	
Dimensions(mm)	410(W) x 500(H) x 370(D)	
Product weight (kg)	8.3	

## DIMENSIONS



## FEATURES

- 140,000+ PLU capacity: program upto 99 categories with 20 pages per category and 72 direct PLUs per page
- Built-in thermal printer: label or receipt
- CL-Works Pro PC software
- Multiple interfaces: USB, LAN, RS232C and Cash Drawer



**GC Weighing  
& Calibrations**



**CALIBRATIONS, SERVICING, REPAIRS AND SALES**

*don't weight to call* 0474 30 40 50 | [gcweigh.com.au](http://gcweigh.com.au)