



Four VFD display with a full graphic LCD



Cartridge loading type label installation



Direct PLU keys & function keys

CL5000 SERIES

Label/Ticket Printing Scale

CL5000 with its reliable weighing function and sophisticated design is possibly the best equipment for enhancing your business operation.

Management functions, including data management, price control and PLU control, are necessary for any retail business environments.

- **Trade Approved (NMI No. 6/4D/333)**
- Flexible & reliable network system (wired/wireless)
- Easy loading printing cartridge



CL5000 SERIES | Label/Ticket Printing Scale

Features

Display - VFD & LCD

The VFD display is used for displaying tare, weight, unit price and total price. The dot matrix LCD is used for all program menus, PLU names, scroll message and etc. The bright blue display gives high legibility for programming and promotion.



Printer & Carriage

High speed printing (100mm/sec). Cartridge loading type for easy replacement of new label/ticket rolls.



PLU Keys

The membrane type keypad adds a sophisticated look of CL5000. Double-click function provides easy access to the key's secondary PLU.

ex) access PLU's 96~114 by double clicking 48~72.



Memory

Standard memory can hold up to 3,000 PLUs and the expansion memory card offers up to 10,000 PLUs.

Label Formats

There are 40 preset labels installed and 20 label formats can be modified freely with CLWorks PC Program.

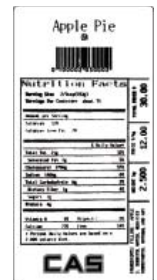
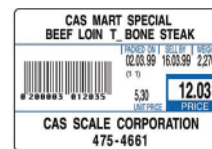
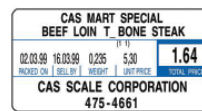
Various Label sizes can be used:

- Continuous Label/ticket - 150mm label

Barcode

Almost every conventional barcode types are available:

UPC, EAN13, EAN13A5, I2OF5, CODE128, CODE39, CODE93, CODABAR, IATA2OF5



Menu System

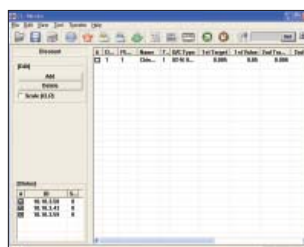
No need to scroll through menus for programming changes. Unique 4 digit 'Menu Code' entry pin points to the desired program field.

ex) Menu code "1120" is for editing PLU name.

PC software: CL-Works

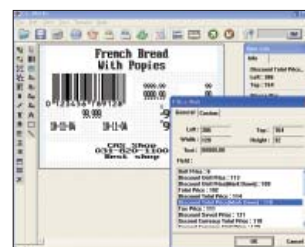
User-Friendly Scale management software.

PLU programming, store data, sales report, label editor, key-pad editor and much more, control all the program data by CL-works program.



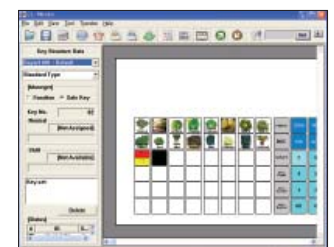
PLU Editor

Easy PLU control.
Allows PLUs to be managed by excel.



Label Editor

20 modifiable label formats.
Easy downloading of label formats.



Keypad Editor

Easy to setup and download.
Key design - colour Image.
Keypad supported.



CL5000 SERIES | Label/Ticket Printing Scale

Product Line-up

CL5000 Series has two models to choose from, non-pole & pole type display. Rear displays available for both models.

- CL5000-B - non-pole type
- CL5000-R - pole type



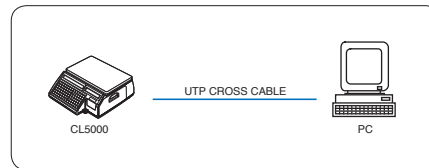
CL5000-B



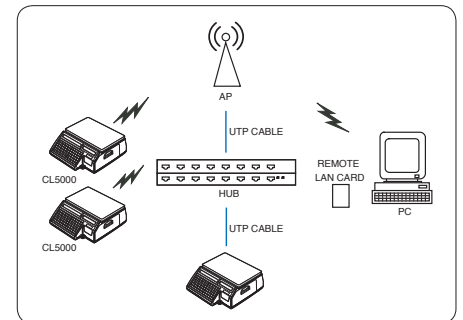
CL5000-R

Network System

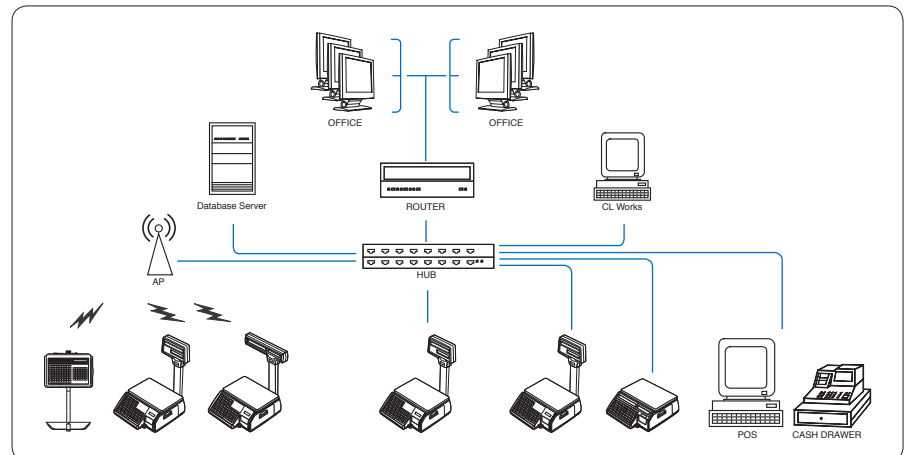
- TCP/IP communication protocol
- IEEE802.11G specification wireless network
- 64/128 bit WEP data security system, WPA(TKIP), WPA-II
- One to one & multi to multi & wired/wireless network
- Network structure for:
 - Large, medium and small independent markets
 - Pre-pack and self-service counter
 - Hyper market



1 to 1



Multi to Multi



Mixed with Wired / Wireless Network



CL5000 SERIES | Label/Ticket Printing Scale

SPECIFICATIONS

Model	CL5000 Series		
Max. Capacity (kg)	3/6	6/15	15/30
Readability (g)	1/2	2/5	5/10
External Resolution	1/3,000 (Dual Interval)		
Display Digit	4 / 5 / 6 / 6 (Preset tare / weight / unit price / total price)		
Display Type	4 VFD displays + full graphic LCD display		
Printing Speed	100mm / sec		
Printer Resolution	202dpi		
Label Size	Width : 40mm ~ 60mm Length : 30mm ~ 120mm		
Operating Temp.	-10°C ~ 40°C		
Power	AC 100 ~ 240V, 50 / 60Hz		
Platter Size (mm)	320(W) x 246(D)		
Dimensions (mm)	B type : 408(W) x 432(D) x 173(H) R type : 408(W) x 493(D) x 607(H)		
Product Weight (kg)	B type : 10.5 R type : 11.2		

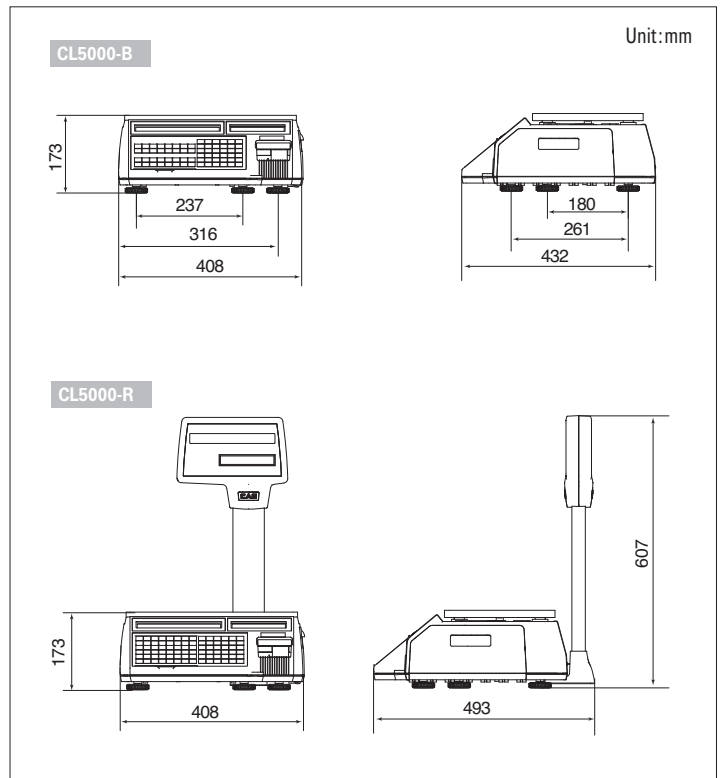
FEATURES

- Memory capacity: 3,000 plus & 1,000 ingredients
- Speed key
 - Standard: 96 speed keys [48 keys x 2 (double -click)]
 - Pole: 144 speed keys [72 keys x 2 (double -click)]
- Supporting free label format design
- High-speed thermal printer
- Cartridge loading-type label installation
- 40 fixed format & 20 customized format designs
- Communication network (TCP/IP)
- PC manager program (CL - Works)

OPTIONS

- 2MB extension memory (10,000PLU & 2,000 ingredients)
- Wireless bridge card
- Platter with back rail
- Large platter or Fish tray
- Metal-dome switch

DIMENSIONS



**GC Weighing
& Calibrations**

**CALIBRATIONS, SERVICING
AND REPAIRS**

don't weight to call

☎ 0474 30 40 50 | gcweigh.com.au

